

HYUNDAI
SECURITY DEVICE

Addressable manual call point **HYU-FA-AMCP001**

User Manual



Cautions



ELECTRICAL HAZARD: Disconnect power from equipment prior to making any internal adjustments. Service should only be performed by qualified personnel.



FRAGILE: Inspect the equipment prior to installation. Do not install the equipment if damage is apparent. Do not attempt to disassemble this equipment. If damaged, return to the supplier.



ELECTROSTATIC HAZARD: This is sensitive electronic equipment. Apply safe ant-static practices when handling this equipment.



CIRCUIT LIMITATIONS: The maximum number of devices connected to a single alarm zone is limited by the control and indicating equipment, and may be limited by local regulations.

Introduction

Manual call points connect to addressable fire detection control and indicating equipment.

These instructions provide trained installation personnel with details to install and commission manual call points for optimum performance.

Preparation

Before commencing installation, ensure all equipment and tools to mount and connect the equipment are available, such as drills, mounting screws, cables and ladders.

NOTE: The unit comes separated from the back-box, ready for installation. However, if necessary, separate the front face from the body by inserting the reset key and gently pulling the lower portion of the front face down and away from the body. Removing the operating element will expose the screws that hold the body to the back-box (see Figs. 3 ~ 5).

Installation

Back-box

1. Feed the conductors through the rear of the back-box.
2. Securely mount the back-box to the wall surface using fixing screws and wall plugs. Fig. 1 shows the back-box mounting hole dimensions.

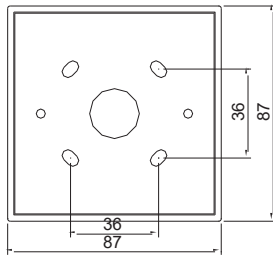


Fig. 1: Back-box dimensions

NOTE: Where the 460-009 weather proof enclosure accessory is used, the back-box is not used.

Wiring

The terminals accept (0.4 ~ 2.5) mm² conductors.

1. Strip the conductor insulation to expose 5 mm of the conductor.
2. Connect the conductors to the terminals as shown in Fig. 2.



WARNING: Take care to ensure the insulation does not get clamped by the terminal contact.

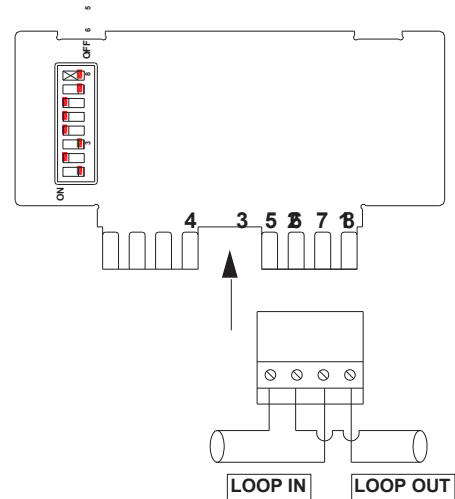


Fig. 2: wiring connections

3. Check the wiring for continuity, short circuits and earth faults.

Address Setting

Select the manual call point address and set the address as shown in Table 1 by adjusting the DIP switch setting located on the rear of the body (see Fig. 3).

Note: Addresses 0, 126 and 127 cannot be used.

Assembly

1. Separate the front face from the body by inserting the reset key and gently pulling the lower portion of the front face down from the body (see Fig. 3).

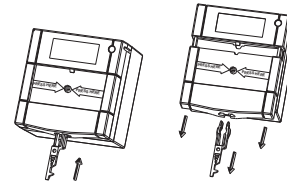


Fig. 3: Separate the front face from the body

2. Remove the operating element (see Fig. 4).

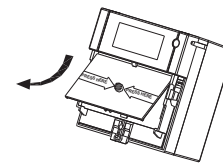


Fig. 4: Operating element

3. Screw the body to the back-box with the CS3 x 30 screws supplied (see Fig. 5).

NOTE: Where the 460-009 weather proof enclosure accessory is used, the body is screwed to the metal mounting bracket in the weather proof enclosure.

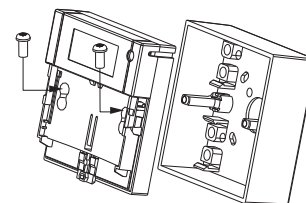


Fig. 5: Body and back-box fixing screws

- Replace the operating element (see Fig. 6)

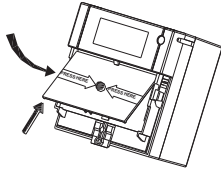


Fig. 6: Replacing the operating element

- Clip the front face onto the body (see Fig. 7).

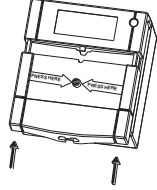


Fig. 7: Replacing the front face

- If necessary, set the displacement element to the normal position using the key supplied.

Commissioning

Manual Call Point

- Ensure all the alarm signal services, releasing devices and extinguisher systems are disabled during the commissioning period.

- Connect power to the manual call point.
- Operate the displacement element with finger pressure.
- Check that the red alarm LED indicator illuminates and an alarm condition occurs at the control and indicating equipment.
- Restore the manual call point to the normal position using the key supplied.
- Reset the control and indicating equipment.
- Check that the red alarm LED indicator is off.

Loop Isolator (where fitted)

- Apply a short circuit to the Loop Out wiring.
- Check that the yellow Isolator LED is on.
- Check that the status of devices connected to the Loop In side of the alarm zone wiring remains unchanged at the control and indicating equipment.
- Remove the short circuit.
- Check that the yellow Isolator LED is off.
- Check that devices connected to the Loop Out side of the alarm zone return to their previous conditions at the control and indicating equipment.

Final Conditions

Ensure all the alarm signal services, releasing devices and extinguisher systems disabled for the commissioning are returned to their previous condition.

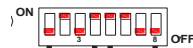


Table 1 – DIP switch address settings

		Most significant nibble							
		0000	1000	0100	1100	0010	1010	0110	1110
Least significant nibble	0000	— ^a	16	32	48	64	80	96	112
	1000	1	17	33	49	65	81	97	113
	0100	2	18	34	50	66	82	98	114
	1100	3	19	35	51	67	83	99	115
	0010	4	20	36	52	68	84	100	116
	1010	5	21	37	53	69	85	101	117
	0110	6	22	38	54	70	86	102	118
	1110	7	23	39	55	71	87	103	119
	0001	8	24	40	56	72	88	104	120
	1001	9	25	41	57	73	89	105	121
	0101	10	26	42	58	74	90	106	122
	1101	11	27	43	59	75	91	107	123
	0011	12	28	44	60	76	92	108	124
	1011	13	29	45	61	77	93	109	125
	0111	14	30	46	62	78	94	110	— ^a
	1111	15	31	47	63	79	95	111	— ^a

^a Address not permitted.

HYUNDAI



For Inquiries, Please Contact:

**Security Shop
Vladimira Nazora 1
11077 Novi Beograd, Serbia
Tel: +381 11 318 68 68
office@securityshop.rs**

Imported/Distributed by Security Shop doo
Licensed by Hyundai Corporation Holdings, Korea
Delivery and After Service shall only be covered within Serbia